

# POSTGRADUATE PROSPECTUS



LONDON  
SCHOOL OF  
THEOLOGY

# THINKING IS JUST THE START – ACTION FOLLOWS

## CONTENTS

- 4 MA in Transformation: Scripture, Church and World
- 6 MA in Integrative Psychotherapy
- 8 Postgraduate Studies in Theological Education
- 10 MA Aspects and Implications of Biblical Interpretation
- 12 Research Degrees
- 16 Life At LST
- 19 Faculty
- 23 Applications

Front Cover: The thousands of students who have graduated from LST work and serve not just in the UK but in countries across the globe. Wherever the Lord calls you in the future – prepare with us.

Welcome to our Postgraduate Prospectus. Studying at the London School of Theology is to access a wealth of world-class theological excellence and I'm excited that you could be joining us.

For almost 70 years LST has provided the opportunity to study, in an interdenominational context, at the highest level of evangelical theology. The 2011-12 syllabus offers a truly thought-provoking and challenging range of courses that will enhance your walk with God whilst preparing you to engage with the world in a wholly new way.

LST is a place that will enable you to hone your research and analytical skills. But it offers much more than that. At LST we are committed to training the whole person. Our faculty will engage, encourage and equip you to reach new levels of achievement as you develop academically, spiritually, practically and personally.



Excellence doesn't come easily, but it is worth the effort. Choosing LST is to be open to God's will for every area of your life. It is to be trained to think, certainly. It is also to be encouraged to work out the implications of that thinking both for your life and for God's world.

Let's change the world together.

**Chris Jack, Acting Principal, London School of Theology**



LST's mission is to provide world-class education in theology and related disciplines to equip people to have a strategic influence for Christ.

We aim to work out this mission in four areas: through the Church, in the world of education, across cultures and in the public square.

## WHO IS LST FOR?

Committed evangelical Christians from various church backgrounds, from the UK, the rest of Europe and around the world.

## HOW DO WE EQUIP STUDENTS?

By developing biblical and theological thinking to high levels, nurturing spiritual gifts and skills, and by encouraging personal spiritual growth.

Through academic programmes, practical training, worship, community life, pastoral care, and through service, scholarship, writing, speaking and by personal example.

## POSTGRADUATE STUDY

Postgraduate study is exciting, enjoyable, stimulating and stretching! It equips you with qualities of understanding, discovery, depth and determination. It enables you to teach others and make a positive difference in their lives. It opens up significant employment opportunities in academia, Christian leadership and the professional world. It enables you to research a topic you're passionate about in considerable depth – and to make a cutting-edge contribution to the Church and to scholarship.

Each year up to 30 postgraduates graduate from LST to take up leadership roles all over the world. The majority of LST graduates can be found teaching in churches, seminaries and university faculties around the world. Many have gone on to publish their thesis and develop writing careers. Others are well-known public speakers and denominational leaders, whilst some have even gone on to establish think-tanks or become diplomats. As part of a larger student body of over 350 students from across the globe, of different ages and various church denominations, LST's postgraduate centre is a unique and exciting place to study.



**DELIVERING EXCELLENCE  
IN THEOLOGICAL  
EDUCATION**

# MA IN TRANSFORMATION: SCRIPTURE, CHURCH AND WORLD



**"LST GAVE ME A MUCH-NEEDED SPACE TO REFLECT ON MY PRACTICE IN THE LIGHT OF SCRIPTURE AND CONTEMPORARY CULTURE AND THIS OPPORTUNITY TO RESEARCH TRANSFORMATIVE LEARNING PROCESSES HAS AFFORDED ME GREATER CONFIDENCE IN WORKING TO ENABLE TRANSFORMATION WITHIN MY LOCAL CHURCH CONTEXT."**

*Chloe Lynch 2009-2011*

God transforms the world through the Gospel. Back in the seventies, and again most recently in 2010, the Lausanne Covenant affirmed that life-giving power in individual lives, within the church and throughout the world. LST stands firmly within that tradition and the MA in Transformation: Scripture, Church and World seeks to equip graduate students both to experience themselves and to foster God's work of transformation in others.

## Church and World

All students must choose at least one 20-credit option that examines how the Gospel transforms the church or world in which we live.

- Bible and Social Transformation
- Theology and Social Transformation
- Transforming Contemporary Apologetics

Each optional module is assessed by an essay of 5,000 words.

## COURSE CONTENT

### ■ The core module (40 credits)

#### Christian Wisdom and Transformation: reading wisely, living wisely

The core module demonstrates and engages hermeneutical tools for understanding the biblical text well, and applying it to life. It will highlight the nature of biblical wisdom, the way it has been understood and applied, and its transforming effects in and through the life of the believer. As part of this course the student writes a reflective journal of their experience of the course. Assessment is by way of two essays of 3,000 words.

### ■ Optional modules<sup>1</sup> (to total 80 credits)

In 2011-2012 the following options will be offered:

#### Scripture

As transformative study of Scripture is at the heart of our evangelical understanding of the faith, we make sure that you can choose up to three 20-credit options.

- Mark's Gospel
- Holy Spirit in Luke/Acts and Paul
- Exegesis of Greek Texts
- Exegesis of Hebrew Texts

1. No options will run which have less than five students interested. The only exceptions are the Greek and Hebrew options for which only three students are necessary.

### Dissertation (60 credits)

MA candidates must complete a dissertation of between 15,000 and 20,000 words. The weighting of the dissertation recognises its significance as an independent piece of work in which candidates apply methodologies and skills mastered in other modules to a topic of their own choice. It is the climax of the course. Students are allocated a supervisor whom they see regularly and who advises and guides them in the creation of a large-scale piece of writing.

## COURSE LENGTH

**Full-time:** 12 months

**Part-time:** 2-3 years

(first and second years usually

1-day per week at LST, third year as necessary for dissertation)

## DELIVERY

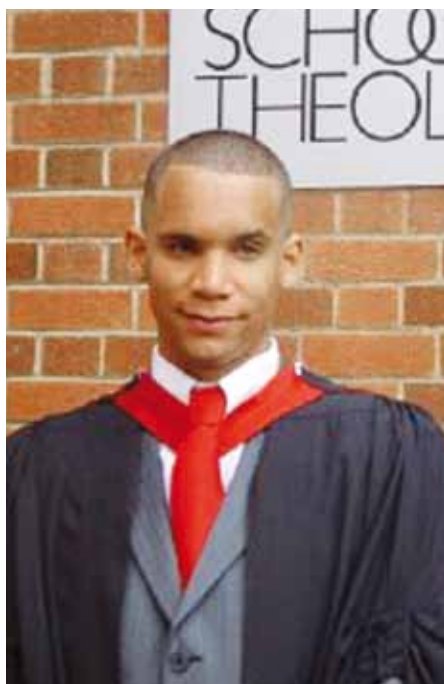
Teaching is normally in the form of seminars, most of which are led by students. With ample preparation and feedback this forms an important part of the students personal and academic growth. Whilst high academic standards are a priority, we are also committed to helping you grow spiritually and experience the transformative impact of further study yourself. This process will be encouraged by pastoral letters and by tutorial conversation slots, designed to help you reflect on the 'MA experience' as it unfolds.

The diverse nationalities, cultures and denominations of students provide an enriching environment in which prior perspectives are challenged and broadened. Indeed, the programme encourages freedom of thought and the exploration of faith within a framework of trust in the authority and sufficiency of Scripture.

A small number of lectures and periodic reflection on postgraduate study skills help to supplement the learning process both in general and as part of each module.

**"THE MA COURSE IN TRANSFORMATION HAS EQUIPPED ME TO EXPLORE THE BIBLE AT A GREATER DEPTH IN BOTH HEBREW AND GREEK, ALL THE WHILE ASKING QUESTIONS RELATING TO HOW IT SHOULD BE APPLIED TO TODAY'S CULTURAL, ECONOMIC, POLITICAL AND MISSIOLOGICAL ISSUES."**

*Wesley Chiang 2009-2011*



**"DOING MY MA AT LONDON SCHOOL OF THEOLOGY GAVE ME SKILLS THAT WOULD HAVE OTHERWISE TAKEN ME YEARS TO LEARN. THE SEMINARS AND DISCUSSIONS TAUGHT ME TO TAKE DEEP AND COMPLICATED CONCEPTS AND THEORIES AND ARTICULATE THEM VERBALLY AND CONCISELY. IT GAVE ME THE CONFIDENCE AND ABILITY TO EXPRESS MYSELF AND KNOW THAT I CAN CONTRIBUTE TO SCHOLARLY DEBATE."**

*Andre Adefope 2009-2010*



**"THE ACADEMIC STANDARD COMBINED WITH THE CLOSE-KNIT COMMUNITY OF STUDENTS AND FACULTY ON THE COURSE HAS PROVIDED ME FAR MORE THAN SIMPLY A DEGREE; IT HAS PROVIDED THE SPACE IN WHICH TO THINK CREATIVELY AND CRITICALLY WITHIN THE 'TRANSFORMATION' RUBRIC, BRIDGING THE POTENTIAL ACADEMIC/PRACTICAL DIVIDE."**

*Tim Goodall 2009-2011*

## ENTRY REQUIREMENTS

Our normal entry requirement is an upper second degree in Theology (UK) or equivalent (overseas). Applicants with degrees in another discipline, and who are able to demonstrate an acceptable level of academic attainment in theology, may also be accepted.

## RESEARCH SEMINARS

MA students are encouraged to attend the research seminars organised throughout the year for the MTh, MPhil and PhD students

under the auspices of the Director of Research. They serve to create awareness of wider issues of concern in contemporary theological thinking, to sharpen research method, and to provide a forum for research students to test their ideas.

To find out more about the MA in Transformation please contact the course leader by email [MATRAN@lst.ac.uk](mailto:MATRAN@lst.ac.uk). For an application form please contact the Postgraduate Registrar [PGRegistrar@lst.ac.uk](mailto:PGRegistrar@lst.ac.uk) or telephone **+44 (0)1923 456162**.

# MA IN INTEGRATIVE PSYCHOTHERAPY

## WITH A FOCUS ON INTEGRATING CHRISTIAN WORLDVIEW AND PHILOSOPHY

Integrative Psychotherapy is now a well established movement, with over 50% of counsellors describing themselves as integrative, rather than holding an allegiance just to one therapeutic approach. Our MA stands in this movement, seeking to integrate Christian faith, theology, worldview and spirituality into the process and understanding of therapy. Find out what it might mean for you to be an integrative therapist, with a well-founded understanding of your therapeutic practice, and of yourself, and of the Christian faith, and how they all fit together.

As with our undergraduate programme in Theology & Counselling, the MA is a joint venture between LST and CWR.



## COURSE CONTENT

The course consists of two core modules (60-credits) and three optional modules (60-credits), culminating in the dissertation (60-credits). In line with other psychotherapy courses at Master's level, you will also be expected to have your own personal therapy (30 hours minimum) and to join in a group process, exploring the impact of the experience as you move through the programme – so that you can become clearer about what it means for you to be integrative.

The core modules are at the heart of the course and will explore the integration of the psychotherapeutic and theological literature and emerging themes, particularly focusing on relationality and what this means for us in theology, in psychology, and in counselling. It will be a great opportunity to explore your own underlying philosophy, anthropology and relationality, and how these impact on your clinical practice.

### Core modules

- Integrative Psychotherapy in Christian Perspective: Being and Relating.
- Integrative Psychotherapy in Christian Perspective: Body, Mind and Story.

### Optional modules

- Psychotherapeutic Approaches to Addictions – drawing from theological, psychological and psychotherapy literature, this module will enable you to think about theories of change, and how to work in a psychotherapy context with clients recovering from various addictions.
- Systems of Relationship – this module focuses on people in systems such as couples, families and other groups. It will explore systems from a theological and psychological perspective, as well as help you apply different systemic theories in practice.
- The Use of Art in Therapy – this 'hands-on' module will explore the use of art as a medium in the therapeutic process. You will engage in personal creative exploration with different art materials and reflect on your experience, referencing theological ideas around human creative activity and a Creator God.
- Contemporary Cognitive Approaches – this module aims to introduce you to some of the newest developments in cognitive approaches to therapy. It will cover approaches such as Mindfulness, the Cognitive Behavioural Analysis System of Psychotherapy and Schema Therapy.

### Dissertation

The dissertation will focus all of your learning onto the topic of your choice. As well as critically evaluating the relevant psychotherapeutic and theological theories, you will reflect on the implications of these for your clinical practice and your own integrative philosophy. The word count for the dissertation is 12,000-15,000 words. You will receive supervision at LST to support you in completing the dissertation module.

## COURSE LENGTH

**Full-time:** 12 months  
**Part-time:** 2-3 years  
 (usually 1 day per week at LST)

## COURSE DELIVERY

The optional modules, like the core modules, will be seminar based. You will contribute to your own learning by presenting some of the topics. As well as the more theoretical elements, there will be a chance to learn the application of skills through group work, demonstrations, discussion of your clinical work and other reflective exercises. Please note: optional modules will run with a minimum of 5 students.

## Clinical Work

Most students will already be seeing clients in voluntary, paid or church settings. Although you are not required to complete a specific number of counselling hours you will still be expected to see clients and have supervision for the duration of the course. This will help you apply your learning and have some material to reflect on for some of the assignments. If you are not already, you will need to become a member of a professional organisation such as the Association of Christian Counsellors (ACC), or the British Association for Counselling and Psychotherapy (BACP) and adhere to their ethical guidelines.

Although we cannot provide you with client work, we may be able to offer some ideas of where to apply should this be needed. We also ask that your clinical work is covered by professional indemnity insurance. It is also worth bearing in mind that some placements will require you to have a CRB check, which may take a little time.

## Personal Therapy

As part of the core module requirements, you will have 30 hours of personal therapy. This will be with a therapist of your choice. Your therapy will remain confidential but all we ask is that you ask your therapist to provide a brief note confirming that you have had 30 hours of personal therapy. As it is part of the course requirement, it will need to take place whilst you are a student. Some therapists offer a reduced fee to students; so do not be afraid to ask if you can have a reduced fee.

## TUTORIAL SUPPORT

We recognise that a course of this nature can be academically, spiritually and emotionally demanding. The tutors will be available to offer support while you tackle the various elements. LST also has a wider support system including a chaplain, various student groups and other practical ways to help you while you are at LST.

## ENTRY REQUIREMENTS

The course is open to graduates in Counselling, or graduates in any discipline who are also trained to HE Diploma level (NVQ Level 5) in Counselling or Psychotherapy, and who are carrying out ongoing supervised clinical practice. You do not need a qualification in theology – but if you have done no theology before, we will ask you to prepare by doing part of LST's distance learning module on Scripture and Hermeneutics to get yourself up and running.

To find out more about the MA in Integrative Psychotherapy please contact the Course Leader by email [MAPSY@lst.ac.uk](mailto:MAPSY@lst.ac.uk). For an application form please contact the Postgraduate Administrator by email [PGRegistrar@lst.ac.uk](mailto:PGRegistrar@lst.ac.uk) or telephone **+44 (0)1923 456162**.



# POSTGRADUATE STUDIES IN THEOLOGICAL EDUCATION

EDUCATION THAT IS THEOLOGICAL AND PROFESSIONAL FOR THEOLOGICAL EDUCATORS WORLDWIDE

This distinctive set of programmes represents a unique opportunity for theological educators from all over the world to obtain much desired professional training. It is no secret that teachers in Bible colleges and seminaries all over the world are traditionally trained in theology but not necessarily in education. LST is working together with strategic international organisations involved in theological education to bridge this need and provide a series of highly flexible and internationally deliverable courses in the discipline of theological education, from a foundational Postgraduate Certificate to a full MA.



## These programmes are for you if:

- You are currently a theological educator teaching in a Bible college or seminary;
- You are a theology graduate who is considering a vocation in theological education;
- You are involved in leadership or academic responsibilities in a theological college, but have not professionally trained for these roles;
- You want to deepen your awareness of what is distinctive (and theological) about theological education and re-discover your calling.

No need to leave your occupation, no need to leave your country. The programmes are designed in such a way that they are best taken while you are actively teaching where you are. Short intensive study sessions during off-semester times (either in London and potentially, subject to approval, in other venues worldwide) together with web-supported distance education are designed for men and women who are already involved in full-time theological education anywhere in the world. The programmes may also be taken full-time, with residency at LST.

## HOW YOU WILL LEARN

In addition to learning through personal study, you will learn by engaging in practical activities, some of which will be shared with a cohort of students through the interactive course website. All the modules will be delivered in such a way that you will be learning with fellow students from all over the world under the guidance of a tutor. The intensives offered during the PGCertTE modules, will provide a further opportunity to engage in an effective learning community atmosphere.

Arrangements will also be made during the programme to be formally observed during your teaching in order to assist you in reflecting on your practice. Assessment will vary within the modules, with a significant weighting on reflective and critical essays.

Three degrees: multiple entry and exit points for maximum flexibility:-

## POSTGRADUATE CERTIFICATE IN THEOLOGICAL EDUCATION (PGCertTE) (60 CREDITS)

The course consists of two 30-credit modules, delivered through a combination of distance education and intensives over the course of a year. There are two possible starting dates (November and June). Each module is supported by a website with interactive functionality to provide class contact.

- **Perspectives in Theological Education (30 credits)**. This module provides an introduction to the nature, purpose and problems of theological education both within the UK and internationally. It also critiques some contemporary and near contemporary debates and expressions of theological education, in order to elucidate key ideas and practices, with the explicit intention of providing a basis for the student's critical judgment on his or her practice. In addition, it explores historical and contemporary models and theories that relate to the nature and role of the theological educator in order to foster the development of practitioners that are professional, reflective, holistic and maturing.
- **Philosophy and Practice of Higher Education (30 credits)**. The aim of this module is to critically relate theory and practice of higher education to theological education, on the understanding that there is an undeniable relationship between the two domains. The module will provide a historical overview of higher education and introduce students to the philosophy of higher education. In addition, students will critically examine the theories, tasks and practices of teaching and learning in higher education with a view to develop best practice. Keeping a global audience in mind, students will be given the opportunity to investigate and critically analyse their own historical, philosophical and pedagogical contexts.

**"I AM THRILLED ABOUT BRIDGING SOLID ACADEMIC THEOLOGY WITH THE STRONG INSIGHTS OF THEOLOGICAL EDUCATION IN METHODOLOGY, PEDAGOGY, AND SPIRITUAL FORMATION."**

*Dr Rolf Hille, Theological Commission WEA*

## SUMMARY DIAGRAM

### Postgraduate Degrees in Theological Education

PGCertTE (Intensive Modules and Distance Education)	PGDipTE (Distance Education Modules)	MA in Theological Education (Distance Education Modules)
<ul style="list-style-type: none"> <li>Perspectives in Theological Education (30)</li> </ul>	<i>Two options from:</i> <ul style="list-style-type: none"> <li>Leadership and Management in Theological Education (30)</li> <li>Designing and Delivering Effective Theological Education (30)</li> <li>Spiritual Formation and Character Education (30)</li> </ul>	<ul style="list-style-type: none"> <li>Researching Theological Education (60)</li> </ul>
<ul style="list-style-type: none"> <li>Philosophy and Practice of Higher Education (30)</li> </ul>		
60 CREDITS	120 CREDITS	180 CREDITS



## POSTGRADUATE DIPLOMA IN THEOLOGICAL EDUCATION (PGDipTE) (120 CREDITS)

In addition to the PGCertTE modules, students will take a further 60-credits delivered by distance education over the course of a year. Distance education modules will start in November and June each lasting 5 months. The following three options are available.

- Leadership and Management in Theological Education (30 credits).** This option is of interest to students involved in positions of leadership, management and administration within theological colleges. The module will help develop critical knowledge and understanding of leadership, management and administration in a variety of contexts and will foster professional abilities that cohere with the ethos of theological education. In addition, the module aims to provide an overview of the purposes and practices of quality assurance management.
- Designing and Delivering Effective Theological Education (30 credits).** This module is designed for those who will be designing courses and curricula and wish to effectively implement a variety of delivery forms, including distance learning through educational technology. The aim of the module is to develop knowledge and understanding of curriculum models and theories, and of their relationship to course design and delivery methodologies, with the intention of fostering professional abilities in designing and delivering effective theological education. It is also rich in practical application, as it seeks to provide theoretical and practical instruction for the development of effective and transformative methodologies in theological education.

- Spiritual Formation and Character Education (30 credits).** The aspect of educating for *being* and not only for *knowing* and *doing* is an essential component of theological education, but one that has historically drifted into the extra curricular realm. This module will explore themes and concepts of spiritual formation and character education, survey historical patterns and recent literature and seek out areas of application in the life and vocation of a theological educator. The module will also give students the opportunity to explore key texts from the rich heritage of literature within this field.

## MA IN THEOLOGICAL EDUCATION (180 CREDITS)

To be awarded the MA in Theological Education, students must complete 120-credits from the PGCertTE and PGDipTE as well as the following 60-credit research module:

- Researching Theological Education (60 credits).** This module explores the concepts and principles that underpin the process of educational research. There is emphasis on developing the critical skills that will facilitate students in their understanding, use and creation of research within the context of theological education. The module will additionally provide students with the opportunity to develop specific research skills and will culminate with a research-based thesis within the field of theological education.

## COURSE LENGTH

PGCertTE: Part-time 1 year

PGDipTE: Part-time 2 years, full-time 1 year

MA in Theological Education:

Part-time 3-4 years, full-time 1 year

## ENTRY REQUIREMENTS

Students enrolling in these postgraduate programmes are normally expected to have an honours degree in the field of theology and to be engaged in the vocation of theological education.

## Imagine...

Imagine knowledgeable and professional theological educators all over the world who can work both autonomously and within teams in a variety of contexts. Imagine theological educators who can adapt to change and generate new ideas in their particular cultures while remaining faithful to the Biblical roots. Imagine theological educators who hold an integrated vision of holistic theological education and have taken responsibility to develop professionally and personally as men and women of God, both in character, interpersonal skills and spirituality.

### We have imagined just these things.

To find out more about Postgraduate Training in Theological Education at LST, please contact the Course Leader by email [education@lst.ac.uk](mailto:education@lst.ac.uk). For an application form please contact the Postgraduate Administrator by email [open@lst.ac.uk](mailto:open@lst.ac.uk) or telephone **+44 (0)1923 456230**.

## VALIDATION AND ENDORSEMENTS

These programmes, validated by Middlesex University, have been developed through a close working relationship with the European Evangelical Accrediting Association. They are also warmly endorsed by key leaders involved in theological education across the globe.

# MA ASPECTS AND IMPLICATIONS OF BIBLICAL INTERPRETATION

## World class teaching... at home

Since 2001 we have offered the MA Aspects and Implications of Biblical Interpretation entirely by distance education. Specifically designed with distance education students in mind, the study material enables you to engage with a range of issues of exegesis and interpretation. Regularly evaluated and revised it remains an innovative and challenging qualification to help prepare you for your next step.

## WHO IS IT FOR?

The course is designed to help you upgrade the analytical and evaluative skills you acquired through your undergraduate studies. You will learn how to use these to relate Scripture to the contemporary world as well as to your own spirituality, past experience and future ministry. It is especially relevant for Christians in several different types of ministry and work:

- Teachers and practitioners who want to update their knowledge and acquire skills of interpretation relevant to their roles.

- Those engaged in, or preparing for, theological teaching in cross-cultural or multi-faith contexts.
- Theological graduates thinking about undertaking a research degree and wanting to develop their understanding of hermeneutics and biblical interpretation to Master's level.
- Internationals who trained outside the UK but who want to gain a cross-cultural benefit from the style of academic discipline in theology practised in the British university system at postgraduate level.

## COURSE CONTENT

The programme consists of four parts: three modules and a written dissertation of 15,000-20,000 words.

### Core module

- Hermeneutics

### Optional modules (two of the following):

- The Holy Spirit and Spiritual Gifts
- Theology of the Poor
- Old Testament Theology in Context
- Qur'anic and post-Qur'anic Interpretation of Biblical Themes

*Please note: if you do not wish to write a dissertation, you can discontinue your studies after completing the three modules and leave with a Postgraduate Diploma qualification.*

## COURSE LENGTH

Up to 3 years



This programme focuses on the interpretation of biblical texts using a variety of tools and methodologies in the fields of exegesis, literary analysis and hermeneutics.

### Dissertation

Your dissertation will demonstrate your ability to gather relevant data and apply critical powers of analysis and evaluation in an extended piece of writing, thus creating a platform for further research.

## THE DISTANCE EDUCATION EXPERIENCE

### Keeping in touch

Wherever you live, the Open Learning Department is fully equipped to work with you, via email and telephone communication. You will be in regular contact with the department, tutors, and other distance learning students. There are also optional study days to support you at all stages of the process.

In addition, through the creation of online forums, it will be possible to interact with other students to discuss matters arising from the study material.

The course benefits from a dedicated part-time member of the faculty working exclusively on this course.

### Studying by Distance Education

For each module you will receive a study book and a reader of photocopies from relevant books and journals. You will also need to obtain copies of a number of specified textbooks for each module. With the assistance of a subject-specialist tutor, you will work through this material. On occasions, you will send sample material for evaluation by the tutor, and be able to discuss your essays with them.

### Assessment

For each module you will need to submit a variety of written assignments, including book reviews, exegetical projects and essays. Assessment is done solely from this work and your dissertation. The department will discuss your particular working patterns and responsibilities and set appropriate deadlines.

### Time Commitment

Each module requires 400 hours of study time, typically spread out as 15 hours per week, for up to 8 months of the year. This will mean that you should complete each programme within the time specified above. If you have more hours available each week, then you may be able to complete your programme in less time. Alternatively, your work may allow you to spend concentrated periods of a few weeks or months solely on study. Distance Learning is flexible enough to accommodate this.

There is also the advantage of up to two years abeyance on each programme, so if you are unable to complete part of your course, due to other commitments, you can leave and come back to study at any given time.

## ENTRY REQUIREMENTS

A good theology degree from a recognised institution will normally be required. In exceptional cases mature candidates who lack formal qualifications may be accepted if they are able to show satisfactory evidence of relevant practical experience, together with an acceptable level of academic attainment in theology.

Please contact our Programme Leader by email [julie.robbs@lst.ac.uk](mailto:julie.robbs@lst.ac.uk) or telephone **+44 (0)1923 456164** to request an application pack. This includes an application form, a description of the modules and information about a written interview which asks you to respond to a number of prompts regarding the 'ins and outs' of studying at a distance. This interview takes the place of a face-to-face interview, which those applying for the on-site MA attend.

Once you have filled in the application and responded to the written interview, please send these documents along with a £30 administrative fee to our Assistant Registrar. We will process your application, and, if successful, will send you the material for the first module and put you in touch with your tutors.

## FREQUENTLY ASKED QUESTIONS

### What if my qualifications don't fit?

We have a range of preparatory courses that can be taken prior to the MA itself. Apply in the normal way, submitting transcripts and any information that you think will help your application. The Programme Leader will then contact you to discuss your situation and agree what would be appropriate for you.

### Do I have to attend LST at any point?

No. We realise that arranging to attend LST regularly might be difficult for a number of people and there is no compulsory attendance.

However, there is normally the option to attend LST at least once a year on a Saturday or for a weekend. Here you will have the opportunity to meet other distance-learning students, tutors, the Programme Leader and the Director of Open Learning. You will be able to participate in seminars similar to those held for on-site students, and make use of LST's library facilities.

### Can I just do one module?

You can enrol for single modules by distance learning without registering for any of the awards. You would still have full access to a tutor and the study events for distance learning students. If you do not register for the award, however, we cannot give credit for your study.

### Use of email?

Open Learning takes full advantage of the benefits of electronic communication. Several of our tutors are abroad and all work submitted to and from them is sent electronically. You will also be able to contact other distance learning students and discuss the study with them. Essays must be submitted to LST by email.

# RESEARCH DEGREES

Research is about digging *deep* into a topic. The fresh discoveries you make will contribute both to your personal growth and also to the community you will be serving. A research degree establishes and demonstrates your competence in the theological discipline in which your thesis is being submitted.

In a research programme you will demonstrate critical knowledge of the main scholarly contributions to your chosen field. You will critically test hypotheses (including your own) by methods appropriate to your discipline. You will write a comprehensive and disciplined study of your topic, which will be coherently structured and appropriately argued. Research degrees are not 'taught' courses, although you may be asked to take a course of guided reading or attend some relevant classes.

## SUPERVISION

Research students are assigned one or two supervisors (the number of supervisors depends on your topic) who have expertise in the student's topic, and will guide and advise them in their research. Normally you will meet with your supervisor at least four times each year (two or three times for part-time students) to discuss at some length written work previously submitted, and to talk through the way ahead. All students are required to visit the School at least once a year. For students who live at a great distance from LST (particularly outside the UK), supervision can be conducted by telephone, Skype or iChat, and contact can be maintained by email.

## POSSIBLE AREAS OF RESEARCH

The lists below give an indication of the main areas of interest among our research supervisors; look at the individual supervisor profiles (pages 19-22) to find out each supervisor's more specific interests. Projects that fall outside the areas below will also be considered.

## OLD TESTAMENT

Exegesis and theology of the Pentateuch, the Deuteronomistic History, Wisdom literature, Hebrew poetry, Psalms, the prophetic literature; OT and biblical theology; OT interpretation and hermeneutics; Hebrew language; discourse analysis of OT texts.

*Supervisors:* Jean-Marc Heimerdinger, Alison Lo, John Wilks.

## NEW TESTAMENT

Criticism and theology of Mark, Luke-Acts, John, the Pauline letters, Hebrews and Revelation; Pauline theology; NT theology, especially God, Christology, pneumatology, ecclesiology, missiology; aspects of New Testament hermeneutics (e.g. the contribution of linguistics, use of the OT in the NT); historical Jesus studies; social-historical, sociological, narrative-critical and theological approaches to the New Testament; Greek language and linguistics; textual criticism.

*Supervisors:* Max Turner, Conrad Gempf, Steve Motyer, Steve Walton, Julie Robb, William Atkinson, Robert Willoughby (MTh).



## LINGUISTICS AND BIBLICAL STUDIES

Discourse analysis; translation theory and practice; contrastive linguistics.

*Supervisors:* Max Turner, Jean-Marc Heimerdinger.

## CHURCH HISTORY AND HISTORICAL THEOLOGY

Patristics; Bernard of Clairvaux; Augustine; Reformation studies; Calvin; nineteenth-century Scottish theology; twentieth-century theology; Walter Rauschenbusch; Reinhold Niebuhr; Jürgen Moltmann; Pentecostalism and charismatic Christianity; ecumenism.

*Supervisors:* Tony Lane, Graham McFarlane, Paul Helm, William Atkinson, Michael Nazir-Ali.

## SYSTEMATIC AND PHILOSOPHICAL THEOLOGY

Trinitarian theology; Christology; Holy Spirit; anthropology; soteriology and atonement; justification; original sin; ecclesiology; sacraments; Scripture and tradition; development of doctrine; personhood; aesthetics; theology and culture; modernity; post-modernity; theological education; Catholic-Protestant dialogue; theological method; Pentecostalism; pentecostal theologies.

*Supervisors:* Graham McFarlane, Tony Lane, Anna Robbins, Paul Helm, William Atkinson.

## APPLIED THEOLOGY AND ETHICS

Theology and contemporary culture; personhood; ethical method; social ethics; ecumenical ethics; ethical dialogue; theology and moral philosophy; medical ethics; Christian ministry, especially charismatic ministries; issues related to mental health; women in ministry; Pentecostal distinctives and practices, especially in the UK.

*Supervisors:* Anna Robbins, Graham McFarlane, William Atkinson.

## CHRISTIAN WORSHIP AND PREACHING

Practice and theology of Christian worship; preaching and homiletics.

*Supervisors:* Chris Jack (MTh), Peter Mead (MTh).

## MISSION THEOLOGY AND HISTORY

History and theology of Christian mission; contemporary missiology; contextual theology.

*Supervisors:* Andrew Kirk, Chris Wigram, Mark Beaumont, Michael Nazir-Ali.

## JUDAISM

Jewish biblical exegesis, ancient and modern; modern Jewish theology.

*Supervisor:* Jean-Marc Heimerdinger.

## ISLAMICS AND CHRISTIAN MUSLIM RELATIONS

Qur'anic studies; Sufism; prophethood; history of Islam; transmission of Islam to the Far East; Islamic radicalism; Christian Muslim relations and apologetics; identity politics.

*Supervisors:* Mark Beaumont, Sean Oliver-Dee, Keith Small, Michael Nazir-Ali.



**"BOTH THE PERSONAL INTEREST AND THE PROFESSIONAL GUIDANCE WHICH MY SUPERVISOR, PROFESSOR TONY LANE, HAS GIVEN IN DIRECTING THE DEVELOPMENT OF MY DISSERTATION HAVE MADE MY EXPERIENCE WITH LST ONE OF MY MOST ENJOYABLE AND PRODUCTIVE EDUCATIONAL VENTURES."**

*Tom Hawkes, Senior Pastor*

# RESEARCH DEGREES

## MTh – Master of Theology

Full-time: 1-2 years

Part-time: 2-3 years

Assessment: Thesis of up to 40,000 words and oral examination (viva)

## WHO IS IT FOR?

The degree is aimed at people with prior theological training – theology graduates, ministers and pastors, missionaries, Religious Education teachers, and business people – as well as potential PhD students. It is particularly suitable for those who cannot commit themselves to the regular structure of a 'taught' Master's course, or to the length of time necessary for a PhD.

## WHAT IS IT ABOUT?

The MTh is ideal if you want to dig deep into one particular area rather than exploring the wider variety of questions posed by a 'taught' MA.

It can provide a chance to reflect in more depth on an experience you have had in your job or ministry, or for pastors, to address their congregations with necessary expertise and critical judgement.

An MTh provides a solid apprenticeship in research and research writing for those who wish to progress to a PhD programme. It is also excellent preparation for a future in teaching, writing and pastoral work.

The MTh is a first research degree, combining training in research and writing skills. Candidates for this degree follow a programme of study approved by the Director of Research and write their thesis on an approved topic in one of the major theological disciplines. The thesis must be well argued and be appropriately presented with clarity and conciseness of expression. It is possible to transfer to MPhil (and then to PhD) registration with the agreement of the supervisor(s) and Director of Research.

## RECENT MTH THESES

Bridget Adams, *Christ in the Market Place: Developing an Authentically Christian Model of Business Chaplaincy*

Heather Churchill, *Who am I? A Reflection to the Topic of Personhood from the Disciplines of Theology, Psychology and Neuroscience*

Tim Creber, *A Dialogue with Nicholas Wolterstorff: An Outline, Assessment and Development of Some Key Aspects of Wolterstorff's Thought in Relation to Religious Belief and Behaviour*

Elizabeth Grove, *Women in Islam: Scriptural Perspectives and Modern Arguments*

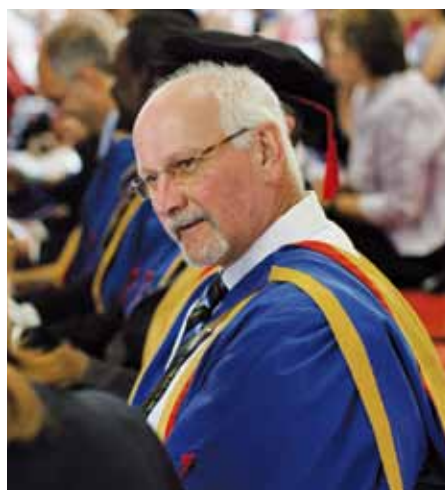
Akhtar Injeeli, *Sufism and Military Jihad: A Critique of the Prevailing View of Non-violent and Pacifist Sufism*

Jonas Kurlburg, *Aspects of Contemporary Free Church Ecclesiology*

Kirk Poth, *The Significance of the Church's Prayer Life in Acts and its Role in Paraenesis and Salvation History*

Dennis Ray, *Christians in Malaysia: A Critical Evaluation of Their Religious Rights with Specific Reference to the Islamic Legal Concept of Dhimma*

Joseph Sverker, *The Holy Spirit and the icon: a critical consideration of Eastern Orthodox Theology of the icon in relation to Orthodox Pneumatology*



## MPhil – Master of Philosophy

Full-time: 2-3 years

Part-time: 3-4 years

Assessment: Thesis of up to 65,000 words and oral examination (viva)

## WHO IS IT FOR?

Like the MTh, the MPhil is aimed at people with prior theological training – theology graduates, ministers and pastors, missionaries, Religious Education teachers, and business people. The MPhil is particularly good for pastors wanting an opportunity to develop or maintain a subject-expertise and its related research skills, either while continuing in pastoral ministry or taking time out to research full-time.

## WHAT IS IT ABOUT?

An MPhil thesis offers a careful and critical investigation and evaluation of an approved topic, and demonstrates understanding of the research methods appropriate to your chosen field. Your thesis does not need not to be 'original'; however, it must demonstrate the ability to critique new ideas and a sense of proportion in evaluating evidence and scholarly interpretations. You are normally expected to read the language of your primary sources for an MPhil, but you are not expected to engage with untranslated secondary literature.

## RECENT MPhil THESES

Rosemary Ashley, *An Investigation into Authority in the Church from a Biblical Perspective*

Katarina Almonte, *The Link between Charismatic Experiences and Revelation in John's Gospel*

Berhane Asmelash, *The History of the Khatmiyyah Tariqah of Eritrea and the Impact of its Rituals and Ceremonials on Pre-existing Beliefs and Practices of the People of Eritrea*

## PhD – Doctor of Philosophy

Full-time: 3-5 years

Part-time: 4-7 years

Assessment: Thesis of up to 100,000 words and oral examination (viva)

## WHO IS IT FOR?

The PhD is for people with prior theological training, usually to Master's degree level, who want to extend and increase their expertise. PhD graduates go on to many fields, including theological teaching in many parts of the world, church-based ministry, and senior leadership in churches or Christian organisations.

## WHY EMBARK ON A PHD?

Doctoral research at LST involves work at the cutting edge of the theological disciplines. You will have the opportunity to furnish both the worldwide church and the academic community with expertise that will carry the best traditions of Christian scholarship into the next generation and enable you to teach at tertiary level.

**"DOING DOCTORAL STUDIES AT LST FROM A LONG WAY AWAY (MELBOURNE, AUSTRALIA) WAS A CHALLENGING BUT REWARDING EXPERIENCE. THROUGHOUT MY STUDIES I APPRECIATED THE ENCOURAGEMENT AND WISDOM OF THE LST STAFF, ESPECIALLY MY SUPERVISOR WHO WAS ONLY EVER AN EMAIL OR SKYPE CONVERSATION AWAY. I WAS VERY GRATEFUL TO HAVE A SUPERVISOR WHO WALKED ME EXPERTLY THROUGH THE MANY STEPS BETWEEN MY INITIAL NERVOUS INTERVIEW AND FINAL SUBMISSION, AND BEYOND TO GETTING MY THESIS PUBLISHED."**

*Peter Mallen, Director, Discipleship Education, Centre for Theology and Ministry, Melbourne, Australia*

## SUMMARY

A PhD thesis will test ideas and investigate an approved topic critically. You need to offer a substantial fresh discovery or analysis, to argue some new critical hypothesis, or to provide substantial new arguments for an older one. Ultimately your research must result in an independent and original contribution to knowledge which, in principle, is worthy of publication. By the time your thesis is submitted, your competence in your chosen area should be comparable with that of the experts. PhD candidates have the ability to interact with their primary sources in the original languages (e.g. Hebrew or Greek) as well as with secondary material in the main research languages (English, French and German). Languages required will vary considerably according to the area of study and some may require no foreign languages.

## RECENT PUBLISHED PHD THESES

Timothy W. R. Churchill, *Divine Initiative and the Christology of the Damascus Road Encounter* (Pickwick, 2010)

Rainer Schacke, *Learning from Willow Creek? Church Services for Seekers in German Milieu Contexts* (Cuvillier Verlag, 2009)

André Munzinger, *Discerning the Spirits: Theological and Ethical Hermeneutics in Paul* (SNTS monograph series; Cambridge University Press, 2007)

Hyung Dae Park, *Finding Herem? A Study of Luke-Acts in the Light of Herem* (Library of NT Studies; T&T Clark, 2007)

Andy Partington, *Church and State: the Contribution of the Church of England Bishops to the House of Lords during the Thatcher Years* (Paternoster, 2006)

Nicholas P. Lunn, *Word Order Variation in Biblical Hebrew Poetry* (Paternoster, 2006)

Martin Parsons, *Unveiling God: Contextualizing Christology for Islamic Culture* (William Carey Library, 2005)

Kiwoong Son, *Zion Symbolism in Hebrews. Hebrews 12:18-24 as a Hermeneutical Key to the Epistle* (Paternoster, 2005)

Sorin Sabou, *Between Horror and Hope. Paul's Metaphorical Language of 'Death' in Romans 6:1-11* (Paternoster, 2005)

Patrick Mitchel, *Evangelicalism and National Identity in Ulster, 1921-1998* (Oxford University Press, 2003)

## RESEARCH ENTRY REQUIREMENTS

To apply to study for an MTh or MPhil you should have at least a good second class honours degree (normally an upper second) in a theological, biblical or related subject, or an internationally recognised equivalent. For a North American Master's degree, you should have a GPA of at least 3.6 for the MTh and at least 3.8 for the MPhil. If you have taken a second theological degree (e.g. a British MA in biblical or theological studies) you will find yourself much better equipped for a research degree.

If your degree is in some other discipline, you will need to demonstrate theological study equivalent to two years full-time study (British DipHE standard). Work experience can be considered in place of qualifications in some circumstances.

Candidates registered for the MTh or MPhil, whose work proves to be of the appropriate standard may (with the agreement of the Director of Research) transfer registration to the MPhil or PhD.

To apply to study for a PhD, entry requirements are similar to the MTh and MPhil. You will initially be registered for the MPhil with a view to upgrade to PhD. Formal registration for PhD normally takes place when you are about a year (of full-time study) away from its completion.

Those seeking registration with qualifications other than those indicated above should write to the Postgraduate Administrator at London School of Theology, giving full details of their qualifications and (where appropriate) providing photocopies of relevant transcripts.

## FULL-TIME OR PART-TIME STUDY HOURS

Full-time study involves approximately 45 hours per week, with part-time study involving 22 hours per week. The hours allow for around 5 weeks of vacation each year.

# LIFE AT LST

## GUTHRIE CENTRE

The Donald Guthrie Centre for Biblical and Theological Research houses the Postgraduate School of Theology for research students. Built in 1995 and named after a former Vice Principal, it provides research workstations, seminar rooms and IT facilities. Every desk has a network point for Internet access, and a bookshelf. The common room is solely for the use of research students. The Guthrie Centre is also the location for the Centre for Islamic Studies and Christian Muslim Relations and its specialist library.

## CENTRE FOR ISLAMIC STUDIES

The Centre for Islamic Studies (CIS) and Christian Muslim Relations was established over fifteen years ago. Since then it has

provided teaching, tuition and supervision to many of the School's undergraduate and postgraduate students who anticipate interacting with Muslims in many different contexts. The CIS also provides appropriate services on a consultancy basis to Christian and corporate agencies engaged in the Muslim world. These services include workshops on Islam, cross-cultural strategies and research reports.

The CIS newsletter, the CIS Occasional Paper Series and the Foundational Papers in Islam Series are of great informative value to both internal and external audiences.

The vision of the CIS is to serve the Church, to be an effective and invaluable resource base and to provide excellent academic training to students, churches, schools and individuals who want to increase their understanding of Islam and Christian Muslim relations.

## LIBRARY

LST's well-stocked library is housed in the former chapel and holds over 50,000 volumes. It is recognised as one of the best specialist theological libraries in the UK.

The library receives some 200 periodical titles a year, and the ATLA Serials™ database enables students to access more than 80,000 bibliographic citations from all major theological journals since 1949. In many cases, full-text copies of articles can also be downloaded. Another major electronic resource is the EBSCO Religion & Philosophy Collection™, a database of electronic journals providing full-text access to articles published in nearly 300 peer-reviewed academic journals in the fields of theology, philosophy, world religions, ethics, biblical studies, religious



history, etc. Among the journals included in the database are such major titles as 'Journal of Religion', 'International Journal of Systematic Theology', 'Church History', 'Journal for the Scientific Study of Religion' and 'Journal of Biblical Literature'. This makes it an essential tool for researchers and students of theology.

The library offers full wireless connectivity and there are also six computer public terminals with Internet and email access. Photocopying facilities are also available.

Other major research libraries – for example the British Library and SOAS in central London, the Bodleian in Oxford and Tyndale House in Cambridge – are not far away.

## BOOKS AND RESOURCES

The LST bookshop stocks a wide range of academic books, theological and otherwise, selected to meet your needs as a student. Our aim is to provide the books you require as rapidly as possible. The shop usually holds up to 2,000 titles. Items that are not in stock can be ordered with many obtained within 24 hours.

Our upfront loyalty scheme offers you excellent value for money with a 10% bonus when you open a bookshop account with a payment of £50, and all registered students are entitled to a 25% discount on titles published by IVP. Other special offers are made available whenever possible.

As well as books, we stock LST's *Christian Life &...* DVD resource series for small groups, Christian music CDs, Traidcraft products including chocolate, and greetings cards.

For more information visit [www.lst.ac.uk/bookshop](http://www.lst.ac.uk/bookshop)

## IT AND COMMUNICATION

Telephone extensions and network points are installed in all rooms. The phone system provides resident students with their own LST email account.

If you are bringing your own computer, there are Internet access points in the library, in your room (if you live on campus) and at your allocated desk (as a PG student). Wireless Internet access is available in the library, the student centre and both Aldis and Mitchell residential houses. If you don't have your own computer, there are public computer terminals for use. There are no charges for using the Internet as permanent access is included in your fees.

LST has an Intranet site where students and staff can post and share information, both formal and informal. The Intranet is accessible whether on or off site and acts as a useful tool for the whole community. Many tutors make study materials available on the Intranet through the Forum area.

Both full-time and part-time students should consider purchasing a computer. For

writing a complex academic dissertation with split footnotes, Hebrew and Greek fonts, automatically formatted bibliographies etc. we recommend a MAC, Windows or Unix machine. You will also need word processing and anti-virus software. We primarily use and recommend Apple computers, but our network supports any up-to-date operating system. Our IT team can provide advice on computer equipment as well as identifying special deals once you've arrived.

## STUDENT CENTRE & RECREATION

LST has a dedicated student centre which was newly refurbished in 2009 with TV lounges, a games room and a gym. Drink and snack machines are regularly stocked and the student kitchen is available for making tea and coffee.

Within 5 miles of the campus, there are squash and badminton courts, golf and sailing facilities and swimming pools.

## SOCIAL EVENTS

The academic year begins with the fun of Freshers' week and ends with Graduation Day celebrations. In-between there are many opportunities for socialising together and highlights include the 'Student Ball' and 'Fun Week'. The LST community provides regular entertainment organised by the student committee.

The Music & Worship department hosts lunchtime recitals and evening concerts covering a wide range of music which includes opera, jazz, classical and features professional musicians.

## WORSHIP

Life at LST centres around our faith in Jesus Christ, and worship of him is at the heart of the studies, relationships and community life. As a culturally diverse group we appreciate and try to reflect the many different styles of worship that are represented. On a couple of occasions during the year we hold a Quiet Day, a change from the normal timetable, taking time out to focus on God. The student committee also organises opportunities for prayer and worship.



# LIFE AT LST

## PASTORAL CARE

Studying theology can be very challenging, personally and intellectually. To help with any pastoral and spiritual concerns you might have, qualified staff are available for you to talk to. For those who might need specialised counselling, this is available through Watford Christian Counselling Service.

## DISABILITIES

We welcome applications from students with disabilities. We have served students with particular needs in the past and are anxious to meet all reasonable requirements of students with special needs. The ground floor of Laing is accessible by wheelchair and we have one purpose-built disabled access bedroom with bathroom facilities adjacent. The best arrangement is for you to discuss your needs in advance with a member of staff

and, if possible, arrange to visit LST so that a mutual assessment can take place. In this way we can try to devise and agree a solution that will be tailor-made to your needs and our ability to provide. Please arrange a discussion with our Disability Manager, Jenny Aston, on **+44 (0)1923 456103** or email [jenny.aston@lst.ac.uk](mailto:jenny.aston@lst.ac.uk).

## ACCOMMODATION

### Onsite

There are three halls of residence, each with its own character: Laing, Aldis and Mitchell – home to around 100 students during term time. The rooms are university-style, a mixture of single (approx 60) and twin-bedded (approx 40) rooms with washbasins. All rooms are fully furnished and bed linen is provided weekly. Every floor has a kitchen and bath/shower facilities. There is also a launderette on site.

### Offsite

For married students, or those choosing to live off site, we keep an up-to-date list of registered properties available for rent. The Assistant Registrar can offer assistance in finding accommodation locally.

There is no on-site crèche for children but we can provide information about child minding and day-care facilities in the area. Visit [www.hillingdon.gov.uk](http://www.hillingdon.gov.uk) for local area information.

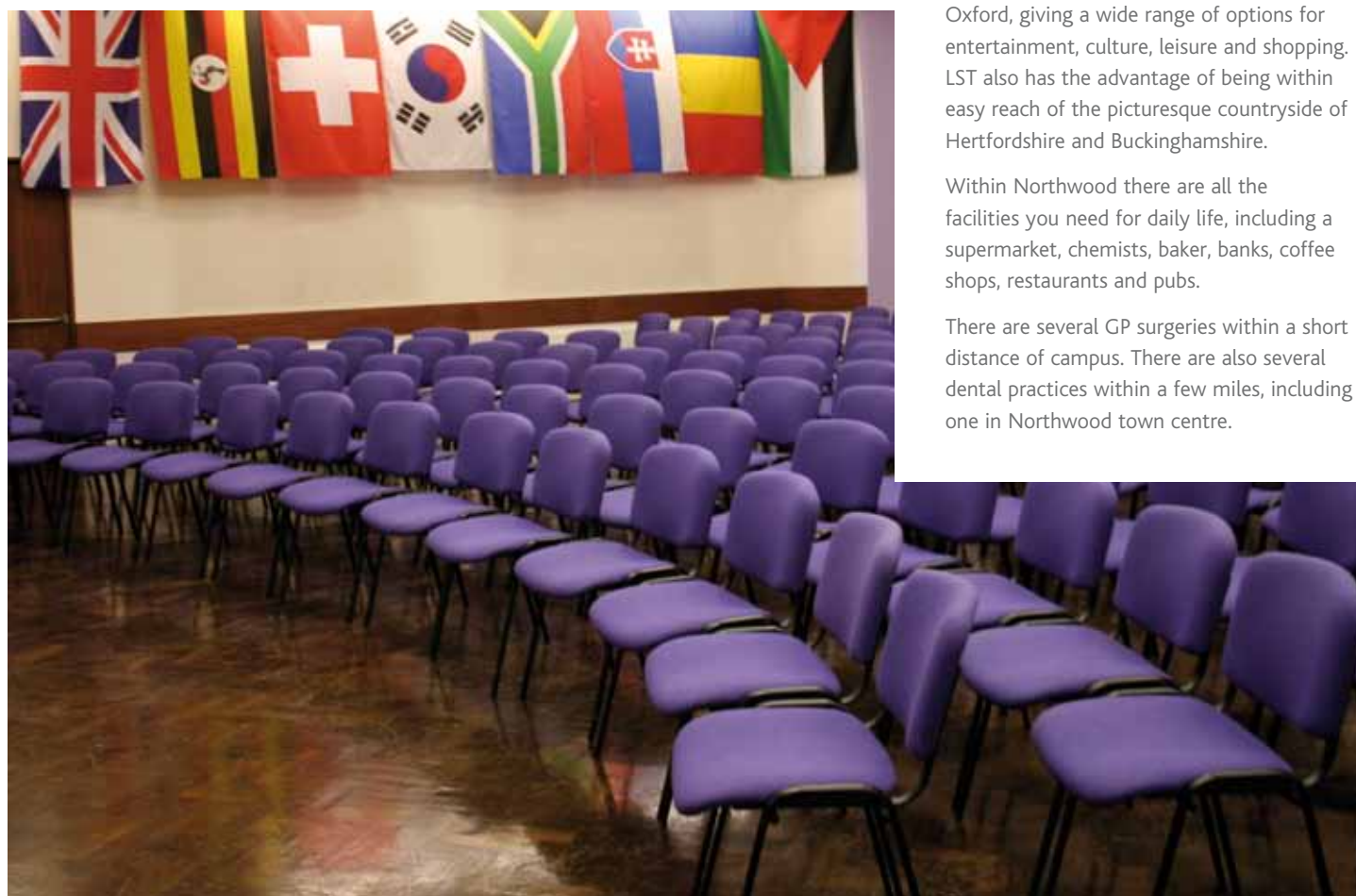
## NORTHWOOD

LST is located in one of London's green and leafy suburbs yet it is only 30 minutes by Underground to Baker Street from central London. You can enjoy the quietness of Northwood together with all that the cosmopolitan city has to offer.

As well as London, LST is within easy reach of Watford, St Albans, Windsor and Oxford, giving a wide range of options for entertainment, culture, leisure and shopping. LST also has the advantage of being within easy reach of the picturesque countryside of Hertfordshire and Buckinghamshire.

Within Northwood there are all the facilities you need for daily life, including a supermarket, chemists, baker, banks, coffee shops, restaurants and pubs.

There are several GP surgeries within a short distance of campus. There are also several dental practices within a few miles, including one in Northwood town centre.



# POSTGRADUATE FACULTY AND RESEARCH SUPERVISORS



## CHRIS JACK

**Vice Principal and Lecturer in Applied Theology**

BA BD (London) MA (CNA)

Chris joined the faculty in September 1997, but was himself a student, having gained his MA here in 1986. A graduate in Modern Languages, Chris holds a first class Honours BD from London, and is currently undertaking PhD studies at Cambridge. For seven years he was Principal of Romsey House Theological Training College in Cambridge and has a wealth of experience in pastoral ministry. He previously worked in France with the European Christian Mission and currently serves on its British and International Boards of Trustees. Both as a chaplain and in the classroom Chris has a heart particularly for issues of pastoral care, spiritual development and worship.



## WILLIAM ATKINSON

**Associate Research Fellow**

MBChB (Edinburgh) MA (CNA) PhD (Edinburgh)

William worked briefly as a doctor before being ordained by Elim Pentecostal Church. He spent 10 years at Kensington Temple in London and 10 years at Elim's college, Regents Theological College, where for 7 years he was Principal. Since 2007, William has led the Elim Pentecostal Church in Braintree, Essex. William earned his degree in medicine from Edinburgh University, an MA from LST and a PhD in theology from Edinburgh. His PhD researched an aspect of the Word-faith movement.

William is interested in supervising research students in: the Word-faith movement and US independent charismatic Christianity; and Pentecostalism (especially British Pentecostalism). He is also interested in New Testament, especially Mark, Luke-Acts, and Paul; Systematic theology, especially relating to Christ's death/atonement and pneumatology; Pastoralia and ministry, especially charismatic ministries, issues relating to mental health, and women in ministry; and Ecclesiology/religious studies, especially the social and ecclesial positioning of pentecostal and charismatic groups.



## MARK BEAUMONT

**Senior Lecturer in Islam and Mission**

MA (Edinburgh) BD (London) PhD (Open University)

After studying Philosophy and English literature at Edinburgh University and Theology at London Bible College Mark was Minister of Dennistoun Baptist Church in Glasgow for five years. He became a member of Arab World Ministries

and taught ESOL in Casablanca, Morocco through the 1980s before becoming lecturer in Mission, Ethics and Historical Theology at Birmingham Bible Institute, where he was involved in the validation of a BA in Theology and an MA in Mission in the 1990s. His PhD from the Oxford Centre for Mission Studies was subsequently published as *Christology in Dialogue with Muslims* in 2005. He has published journal articles and book chapters on Christian interpretation of the Qur'an, and Muslim interpretation of the Bible, and has contributed entries to the *Encyclopedia of the Bible and its Reception* on Muslim interpretations of Biblical themes. He is currently co-editing with Maha El-Kaisy Friemuth of the Catholic University of Leuven a text and translation of a refutation of the divinity of Christ attributed to al-Ghazali. He was a visiting lecturer in Missiology in India, in Christian-Muslim relations in Bosnia, and in Islamic Studies at Birmingham University.

Mark's research interests are in Christian relations with Muslims, especially concerning Christology, the Trinity and Scripture; Muslim interpretation of Biblical themes and Christian interpretation of Qur'anic themes.

He has been active in leading worship and preaching in the Midlands and is a council member of Arab World Ministries UK.



## GRAHAM CHEESMAN

**Associate Research Fellow**

BD (London) MPhil (CNA) PhD (QUB)

Graham was, until recently, the director of the Centre for Theological Education in Belfast, before that, the principal of a bible college, a missionary and a pastor. He is a staff worker in Europe for the European Evangelical Accrediting Association and has acted as lecturer and consultant in theological education in various parts of the world. He has published three books and a number of articles and is editor of one journal and consulting editor of another, in the subject of theological education.

Graham is interested in supervising PhD and other postgraduate students in the area of theological education. He has supervised students in such areas as concepts in theological education, theological education and distance learning, training of missionaries, church and seminary relations, women in theological education and contextualisation of theological education. He has special knowledge of the European and African situations but has supervised doctoral students from Europe, Africa, North America, India and the Far East. He greatly enjoys supervising studies of a local situation in theological education, bring to bear on it ideas of good practice and good thinking in the subject.



## CONRAD GEMPE

**Lecturer in New Testament**

AB (Gordon College) MTS (Boston) PhD (Aberdeen)

Conrad was born and brought up just outside New York City. He read for his first degree at Gordon College, going on to take his Masters at Boston University, before moving to Scotland to do his PhD on the book of Acts under Howard Marshall. Conrad spent a post-doctoral year at Cambridge and Tyndale house before joining LST in 1989 to lecture in New Testament.

Conrad's speciality areas are Mark, Luke, Acts and the backgrounds of the Pauline letters. He has acted as a translation/theological advisor to the NIV Translation Committee, to Rob Lacey on his translation of the gospels, and to Siku on the New Testament of *The Manga Bible*. He has also contributed to, or edited a large number of books and reference works, including IVP's *New Bible Commentary*; *The Dictionary of Paul and His Letters*; *The Book of Acts in its Graeco-Roman Setting* and *Christian Life & Today's World*.



## JEAN-MARC HEIMERDINGER

**Lecturer in Hebrew and Judaism**

BA (Strasbourg) M es L (Lyons) Deug in Hebrew (Lyons) PhD (Reading)

Originally from Alsace, France, Jean-Marc teaches courses in Biblical Hebrew, Hebrew texts, Discourse Analysis of Biblical Texts and Judaism. He worked as a French teacher in France and West Africa and was also pastor of a Baptist church in Lyons. He developed an interest in the Hebrew language while working as a research assistant in the department of Hebrew Studies at Lyons University. His work led to a PhD in Hebrew Linguistics at Reading University. The thesis provides a linguistic analysis of discourse features in Old Testament narratives.

Jean-Marc's Hebrew studies have also led to a wider interest in Judaism, the role of the Bible in Jewish thought and the Jewish interpretation of the Bible. Jean-Marc's main research interests are the linguistic analysis and the exegesis of the Hebrew Bible, but what matters most to him is to demonstrate the ongoing relevance of the Hebrew Scriptures in the life of faith and to link biblical thought with spiritual life.



## PAUL HELM

### Associate Research Faculty

BA MA (Oxon)

Paul Helm was Professor of History and Philosophy of Religion at King's College, London, 1993-2000. Previous to that he was a Reader in Philosophy at the University of Liverpool, where he taught for many years. He is now a Teaching Fellow at Regent College, Vancouver, where he was J.I.Packer Professor of Philosophical Theology 2001-5. He also teaches at the Highland Theological College.

Paul is interested in supervising research students in Philosophy of Religion, Systematic Theology and Theology of the Reformation. Paul's interests are in all aspects of philosophical theology and in any Christian theological views that have philosophical implications. In particular, he is currently interested in God's relation to time (with reference to theories of the temporal order) and philosophical aspects of the ideas of John Calvin. He approaches these in an unabashedly analytic mode, and so his intellectual connections and sympathies are more with Reformed Orthodoxy and medievalism than with modern 'continental' philosophy.



## ANDREW KIRK

### Associate Research Faculty

BD (London) BA (Cantab)  
MPhil (London)  
AKC (King's College, London)

Andrew's whole working life has been in teaching at a postgraduate level in different forms of adult education. He has wide experience in teaching in a cross-cultural situation.

His most recent teaching responsibilities have been as a visiting lecturer in the MTh mission programme of the Protestant Institute for Mission Studies in Budapest, in the MA in Contextual Missiology programme of the International Baptist Theological Seminary (IBTS) in Prague and the MA programme of the Baptist Faculty, University of Bucharest.

Andrew is interested in supervising research students doing research in the field of Missiology, in particular issues to do with the Theology of Mission, the Contextualisation of the Gospel, Witness in a Secular Environment, Apologetics, Interreligious matters (especially touching Islam and the West) and Latin American Theology and Mission.



## TONY LANE

### Professor of Historical Theology

MA BD DD (Oxon)

Tony studied Maths and Theology at Oxford and Cambridge before joining LST's faculty in 1973. He has remained here since, apart from a year away spent teaching in Kenya and researching in the USA.

In 2000 he was recognised by Brunel University as Professor of Historical Theology and in 2004 he was awarded the degree of Doctor of Divinity by Oxford University.

An enthusiast for Christian doctrine, and especially its history, Tony has the ability to express complex doctrinal concepts. His desire is for students to become more aware of the riches of the Christian heritage. For many years Tony chaired the Tyndale Fellowship Doctrine Group and he is one of the Presidium that runs four-yearly international congresses on Calvin research. He has examined PhDs for various universities, including Oxford, Cambridge, London and Edinburgh.

Tony is interested in supervising students in historical theology. His prime specialisms are Calvin and Bernard of Clairvaux, though he has also supervised theses on other theologians from the Early Church, the Middle Ages and the sixteenth and seventeenth centuries, as well as Jürgen Moltmann. Theological themes that are of interest to him are especially Scripture and tradition, sin and grace, justification, sacraments and Catholic-Protestant dialogue.



## ALISON LO

### Lecturer in Old Testament

BTh (Evangel Seminary, Hong Kong) MDiv (Trinity International University, Illinois) PhD (Glos)

Alison was born and brought up in Hong Kong. She earned her PhD degree in Old Testament from the University of Gloucestershire (2002). Alison was Visiting Scholar at the Hebrew University of Jerusalem (2003-2004), undertaking her post-doctoral research on Medieval Jewish Perspective on Job 1-2. Before joining the faculty at LST, she taught at the Chinese University of Hong Kong (2004-2007).

Alison's area of special interest is in wisdom literature, prophetic literature, and the Psalms.



## GRAHAM MCFARLANE

### BA Course Leader and Senior Lecturer in Systematic Theology

BA MA (CNA) Dip Ed (Glasgow) TQSE (RE) PhD (London)

Graham lectures in Systematic Theology. He trained at LST (BA & MA), and taught RE for 4 years before taking his PhD at King's College (KQC) with Colin Gunton. He joined the School's faculty in 1990 as Lecturer in Systematic Theology and Assistant Director of Research. Graham enjoys encouraging people to think through their faith.

Graham supervises research students in Systematic Theology from an Evangelical perspective. He is

particularly interested in atonement, hamartiology, relational theology which includes trinitarian theology, christology, pneumatology, theological anthropology and soteriology. His research interest in Edward Irving continues as well as interest in other nineteenth century Scottish theologians. He has successfully supervised to completion several PhDs in Orthodox and Romanian theology. He has a keen interest in contemporary culture and the relationship between theology, modern art and our changing culture.



## PETER MEAD

### Associate Research Fellow

BA (UWE Bristol) MDiv MA (Multnomah Biblical Seminary) DMin (Gordon-Conwell Theology Seminary)

Peter serves as an International Minister with Operation Mobilisation and as a mentor in the Cor Deo mentored training programme. He is also one of the Langham Preaching trainers. These roles allow him to teach in Bible colleges, conference and mission events around the world. He is very involved in the ministry of the local church.

Peter is interested in supervising MTh research students in homiletics. He is especially interested in expository approaches to preaching, the role of preaching in spiritual formation, the interaction of preaching with hermeneutics and preaching the biblical genres. Interests also include cross-cultural homiletics, contemporary preaching, creative preaching, theology of preaching and studies of preaching in the Bible (especially Hebrews as sermon, and the speeches in Acts, as well as the preaching of the OT prophets and Jesus).



## STEVE MOTYER

### Theology & Counselling Course Leader and Lecturer in New Testament and Hermeneutics

MA (Cantab) MLitt (Bristol) PhD (London)

Steve studied at Cambridge, Bristol, London and Tübingen Universities and has written scholarly books on Romans 9-11, and the 'Jews' in John's Gospel. Recently his lifelong interest in hermeneutics has extended into looking at the relationship between psychology and theology, and he is training as a psychotherapist in connection with leading the Theology & Counselling programme at the School.

Steve has a wide range of research interests, including John's Gospel (both literature and theology), Paul, Hebrews and Revelation in the New Testament area, as well as Hermeneutics and the interface between Christian theology and anthropology on the one hand, and contemporary psychology and psychotherapy on the other. With this combination, it's not surprising that he's also interested in the impact of psychology on biblical interpretation, and in the 'psychological' reading of biblical texts!



## BISHOP MICHAEL J NAZIR-ALI

Associate Research Faculty

BA (Karachi) BLitt (Oxon)  
MLitt (Cantab) ThD (Australian  
College of Theology, NSW)  
DD (Lambeth)

Bishop Michael Nazir-Ali was the 106th Bishop of Rochester, for 15 years, until 1 September 2009. He is originally from Asia and was the first non-white Diocesan Bishop in the Church of England. He was appointed in 1994. Before that he was the General Secretary of CMS from 1989-1994. He holds both British and Pakistani citizenship and from 1999 was a member of the House of Lords where he was active in a number of areas of national and international concern. He has both a Christian and a Muslim family background and is now President of the Oxford Centre for Training, Research, Advocacy and Development (OXTRAD).

Michael is interested in the following areas of research: Mission and Dialogue, Islam: history, Christian Muslim Relations, Sufism, Shari'a, Anglican Communion, Ecumenicalism especially Anglican-Roman Catholic Dialogue and United churches.



## SEAN OLIVER-DEE

Associate Research Fellow

BA PGCE (London) MTh  
(Brunel) PhD (Middlesex)

Sean completed his PhD in British engagement in issues of Islamic governance in the Summer 2008 at LST. Since then he has worked freelance, writing papers for a political think-tank and NGOs. He delivered the LST Level 3 Islam in the Modern World course in 2007/8 and continues to take seminars and lectures on an occasional basis at the School.

In addition to his work at LST, Sean is also Associate Researcher for the Anglican Representative to the European Union. He is a regular consultant for government on identity issues and has written several papers for NGOs and think-tanks and his PhD was published by Rowman and Littlefield in August 2009.

Sean is interested in supervising research students in the field of Islamic identity and authority issues. This could focus on the theology of authority and/or political theory. It could also focus on modern salafist philosophy, both in India and in the Middle East. Sean's own research has examined Western governmental engagement with such Islamic governance as well as examining questions of citizenship and identity for both Christians and Muslims.



## JANET PENNY

MA in Integrative  
Psychotherapy Course  
Leader, Lecturer in  
Counselling

BA Hons (Reading) MSc,  
PPDip (London Metropolitan)

Janet is a Chartered Counselling Psychologist accredited by the British Psychological Society and has worked in the public sector with children and adults. She currently runs her own private practice and is researching spirituality in psychotherapy.

Janet is also involved with training GP Registrars and teaches psychology as a Visiting Lecturer at the University of Reading.



## ANDRE RADMALL

Lecturer in Counselling

BA (Middlesex) MSc  
(Buckinghamshire)  
MA (Hertfordshire)

Andre's first training was as a psychiatric nurse. Most of Andre's career has been in the mental health field, working with social services, adolescent units and more recently managing an eating disorders unit. Andre has trained as a psychotherapist and started a successful private practice, studied theology and was ordained to the Anglican ministry as a voluntary curate.

Andre's research interests are in the fields of addiction psychology and the influence of narrative on identity formation and relational systems.



## JULIE ROBB

Academic Advisor to the MA  
by Distance Learning and  
Research Supervisor

BSc (Cardiff) PGDip (Leeds) BA  
MTh (Brunel) PhD (London)

Born into a Christian family, Julie first studied Biochemistry, before qualifying and working as a dietician in the NHS. Having come to LST to study theology, she completed her doctoral studies in 2003. Her particular interests are the use of the OT in the NT, the inter-testamental period, the Gospels and Acts. She has been appointed a Bishop's Adviser on Selection for the St Albans Diocese, has taught on their continuing ministry education courses and for the now defunct St Albans and Oxford Ministry Course.

Julie has written for Scripture Union in their 'Encounter with God' series of Bible study notes, and written reviews for JSNT and Evangelical Quarterly.

Julie is interested in supervising research in the New Testament, particularly in Luke-Acts, Matthew, John and Jesus. She also has interests in Christology, biblical theology and hermeneutics, the use of the OT in the NT and in inter-testamental Judaism and the NT.



## ANNA ROBBINS

Senior Lecturer in Theology  
and Contemporary Studies

BA (Carleton) MRE MA  
(Acadia) PhD (Wales)

Anna came to faith in Christ at a young age while growing up in Atlantic Canada. She studied political science in Ottawa, and after working for the Red Cross Society, went on to study theology and serve in Baptist ministry in Nova Scotia before moving to Wales to research Christian social ethics. She joined LST's faculty in 2000.

Anna researches, writes, and speaks internationally in the areas of social ethics, contemporary culture and apologetics, challenging Christians to think clearly about living a biblically transformative faith in a rapidly-changing world.

Anna supervises students in theology, ethics, and contemporary culture. In particular, she is interested in ethical methodology, and the interface between theology, contemporary thought and apologetical method. She has a specific interest in the work of several theologians, including Reinhold Niebuhr, Walter Rauschbusch, P.T. Forsyth, Alan P. F. Sell, and H. Richard Niebuhr. Her own research is currently focused on the interface between ethics and apologetics, and the relation of the individual to society in ethical practice.



## KEITH SMALL

Associate Research Fellow

BA (Western Michigan  
University) ThM (Dallas  
Theological Seminary)  
PhD (Brunel)

Keith's PhD was in Islamic, through LST. Dr Small has taught undergraduate and postgraduate levels in Britain and internationally concerning Islamic and Christian ministries to Muslims. In addition to his academic credentials he has over twenty years of ministry experience to Muslims in the UK.

Keith is interested in supervising research students in Qur'anic textual criticism, comparative textual criticism between the New Testament and the Qur'an, comparative topics concerning the Bible and the Qur'an, and areas of comparative Islamic and Christian theology.



## WENDY SOMERVILLE

### Visiting Lecturer

BA MSc MB ChB FRCP

Prior to training in theology and counselling Wendy was a consultant physician involved in training doctors and other professionals in New Zealand and the UK. She is also a BACP accredited counsellor/psychotherapist, currently running a private practice with adult individual and couple clients, and providing counselling supervision for individuals and groups. Research interests include the experience of counsellors and therapists in training.

On our MA in Integrative Psychotherapy Wendy is involved in the vital task of accompanying our students as they integrate their faith and theology with their experience and understanding as therapists.



## MAX TURNER

### Professor Emeritus

MA PhD (Cantab) FRSA

Max studied medicine and theology at Cambridge and then went on to complete

his NT doctorate on Luke-Acts there. With the exception of a five-year secondment as lecturer in the University of Aberdeen, he has been with LST since 1974. He returned from Aberdeen (1991) to become the Director of Research, then Vice-Principal (1996), and in 1998 became the School's first lecturer to be recognised as Professor.

His major books are on the Holy Spirit (*Power from on High* and *The Holy Spirit and Spiritual Gifts*). He has also written *Linguistics and Biblical Interpretation* (with Peter Cotterell). He has supervised to completion and publication some 15 doctoral theses, and greatly enjoys the relationships such projects involve.

Max, a Baptist minister, has been a regular speaker at church training/conference venues and a member of EA's Committee for Unity and Truth amongst Evangelicals.



## KATE VINE

### Visiting Lecturer

BA (Brunel) MA (Brunel) PgD (Hertfordshire)

Kate is a State Registered Art Therapist with the Health

Professions Council and is currently working in mainstream educational settings with children and young people. After initial studies in the visual arts she gained postgraduate qualifications in theology

before completing her professional training in Art Therapy. She has experience of working in the field of adult mental health and learning disability.

On our MA in Integrative Psychotherapy Kate particularly relishes the opportunity to bring the two sides of her career and interests together, coming in as a Visiting Lecturer to run the module in the Use of Art in Therapy.



## STEVE WALTON

### Senior Lecturer in Greek and New Testament Studies

BSc (Birmingham) MA (Cantab) PhD (Sheffield)

Steve served on a church staff, in student ministry with UCCF, advised people on God's call with the Church Pastoral Aid Society, was a househusband, a bishop's chaplain, and lectured at Bedford College and St John's College, Nottingham. He came to LST in 1999.

Steve's passion is to help others engage with the NT for themselves. He is therefore an enthusiastic teacher of Greek. Steve is interested in supervising research students in New Testament, particularly in the theology and critical study of Luke and Acts, Mark, Jesus, and Paul (particularly, but not exclusively, Philippians and 1 and 2 Thessalonians). He also has interests in textual criticism, NT understandings of God, Christology and pneumatology, theological readings of Scripture (including biblical theology and hermeneutics), narrative criticism, the appropriation of the OT in the NT, Greek grammar and syntax, and has also joint-supervised theses in Christian Muslim issues.



## CHRIS WIGRAM

### Associate Research Fellow

BA MA (CNA) PhD (The Netherlands)

Chris has taught both English and Religious Education

at secondary level, and worked for Operation Mobilisation with OM ships. He then served with OMF in the Philippines. Up until 2008, Chris was OMF International's UK Director. He is now the International Director for European Christian Mission International (ECMI). Chris is interested in Mission Studies especially the interface between the use of the Bible and mission, how influential the Bible has actually been in the practice of mission. The hermeneutics of mission, how different parts of the world read the Bible, how these challenge western theology and the implications of this for Christianity worldwide.



## JOHN WILKS

### Director of Open Learning

BA MA (Keele) BA (CNA) PhD (OU)

John's call to Christian service took the form of a

shift in subjects rather than careers. Initially trained in music, taking prizes in International competitions for orchestral composition, he subsequently studied theology at LST and St John's College, Nottingham. Now an Old Testament specialist, his research focused on the structure of Isaiah 40-55. He prefers to maintain a diverse range of interests, however, and is as preoccupied with subjects such as contemporary opera and minimalism as with the evolution/creation debate, male (hetero-) sexuality and the development of monotheism in Ancient Israel. He is the author of the 'Deeper Encounter' series, a six-volume set of small group study notes published by Scripture Union, and one of the Editors for *Evangelical Quarterly*.



## ROBERT WILLOUGHBY

### Lecturer in New Testament

BA PGCE (Nottingham) BA MA (CNA)

Robert did his first degree in modern languages at Nottingham and went on to teach them at a large comprehensive school in Derby for four years. During this time he worked amongst Asian immigrants, which eventually led him to short-term service in India with Operation Mobilization. He has served on several mission boards.

A graduate of LST, Robert began teaching New Testament here in 1984 and spent two years researching John's Gospel in Cambridge.

Robert teaches the Bible and Social Transformation and Theology and Social Transformation on the MA course. He takes a keen interest in current affairs locally, nationally and internationally and is involved as much as time permits.

Robert will consider supervising research into the New Testament, especially into all aspects of the Gospels to MTh level. He is also interested in supervising students in the field of social and political theology, the theology of children and the interaction of theology and the arts.

# APPLICATIONS

## HOW TO APPLY

Research programmes start in October and January each year. The MA courses start in September. You should apply for these at least four months in advance. Late applications are accepted, but your entry may be delayed, particularly if you are applying from outside the UK.

If you would find it helpful, we can arrange an informal interview. This gives you the chance to talk with a member of staff, visit the campus and discuss finance.

You should complete the relevant application forms. There are separate forms for the MAs and research programmes, so please ensure you have the correct form. All of the forms can be accessed on our website.

All applications should be addressed to: Postgraduate Registrar, London School of Theology, Green Lane, Northwood, HA6 2UW.

Eligible applicants will normally be interviewed either by a panel of tutors or a potential supervisor (not applicable to the MA by Distance Education).

Do consider joining us for an Enquirers' Day to find out more about life and study at LST. Check out our website for the latest dates.

## FINANCE

As well as tuition fees and living expenses, there are smaller costs to be aware of, such as photocopying, examination fees and thesis binding. You will also need a computer to write up your thesis.

The *Directory of Grant Making Trusts* is a useful resource for finding possible sources of support. However, there are very few grants and scholarships available, and there is stiff competition for these.

Visit our website for more information about finance at [www.lst.ac.uk](http://www.lst.ac.uk).

## INTERNATIONAL STUDENTS

If English is not your first language you will need to arrange to take the British Council's English test. We cannot confirm your place until you have produced an IELTS test report and reached a score of 7.0 (all individual elements should be 6.5 or higher) or an equivalent English language proficiency report, i.e. TOEFL 600. There are many test centres, easily sourced on the Internet. Your proficiency in English will also be considered during your interview.

International students should note that non-UK/EU passport holders are only admitted to the UK for full-time research, though, in certain circumstances and by agreement of the School, they may be able to undertake part-time research while living outside the UK.

If you are applying from outside the EU, we strongly advise that you submit your application at least nine months ahead of the academic year you wish to begin studies or no later than 30 April of the year of entry, as international applications take longer to process.

We will also only be able to accept you when you can guarantee to meet the costs of your studies.

If you are applying from a non-EU country, you won't normally be permitted to take paid work in the UK.

LST is an accredited educational institution with the UK Border and Immigration Authority. Students are therefore eligible to study in the UK as long as they successfully complete the LST application process and fulfil all other UK visa entry requirements. For further details regarding study in the UK visit [www.ukba.homeoffice.gov.uk/studyingintheuk/](http://www.ukba.homeoffice.gov.uk/studyingintheuk/).

## MIDDLESEX UNIVERSITY



Middlesex  
University

Programmes currently running at London School of Theology are validated by Middlesex University. Visit [www.mdx.ac.uk](http://www.mdx.ac.uk)

## AMERICAN PARTNERS

A number of students at Asbury Theological Seminary (Kentucky), Gordon-Conwell Theological Seminary (Boston) and Bethel Seminary (Minneapolis) in the USA are registered for PhDs in collaboration with LST.

## CONTACT

For enquiries regarding all of our postgraduate courses please contact the Postgraduate Administrator on **+44 (0)1923 456162** or email [PGRegistrar@lst.ac.uk](mailto:PGRegistrar@lst.ac.uk).



**BE FILLED WITH A LIGHT THAT WON'T FADE**



# HOW TO FIND US

London School of Theology is situated in Northwood, 30 minutes north west of central London by London Underground, and within easy reach of the M1, M40, M25 and Heathrow Airport.

For those using SatNav, use the postcode HA6 2UZ.

For detailed directions, visit [www.lst.ac.uk/directions](http://www.lst.ac.uk/directions).



LONDON  
SCHOOL OF  
THEOLOGY

London School of Theology  
Green Lane, Northwood, HA6 2UW

t +44 (0)1923 456000 e [enquiries@lst.ac.uk](mailto:enquiries@lst.ac.uk)  
f +44 (0)1923 456001 [www.lst.ac.uk](http://www.lst.ac.uk) Registered Charity No. 312778

Design: Adept Design  
[www.adeptdesign.co.uk](http://www.adeptdesign.co.uk)

 Follow @LSTheology